

## QTR™ 4000LS

**The new innovative Quick Turn Riser connector QTR™ 4000LS is an efficient and safe heavy duty connector. The connector combines MHWirth's simple locking system with load sharing and simplified stabbing operations.**

The QTR™ 4000LS connector integrates the efficient operations from our well-proven riser system with the advantages of load sharing. The design further results in a faster stabbing operation which will take the riser connector stabbing and make up out of the critical line in the tripping operations.

The spider and the lock ring will line up the connector prior to engaging the p-line pin and boxes and thereby reduce the risk of damaging the seal areas during tripping operations.

The QTR™ 4000LS riser connector does not require any heavy tools. One person, with a steel bar, can lock or unlock the connector in less than 10 seconds. This, in addition to no pretension requirements and confirmed lock position, ensures that the superior HSSE performance of our riser products is incorporated in this innovative design.

The QTR™ 4000LS is made out of carefully selected high strength steels with reduced risk of Hydrogen Induced Stress Cracking (HISC). It is well suited for thermally sprayed aluminium coating and enhanced corrosion protection. The QTR™ 4000LS riser connector is certified by DNV and ABS.

### Tool Package

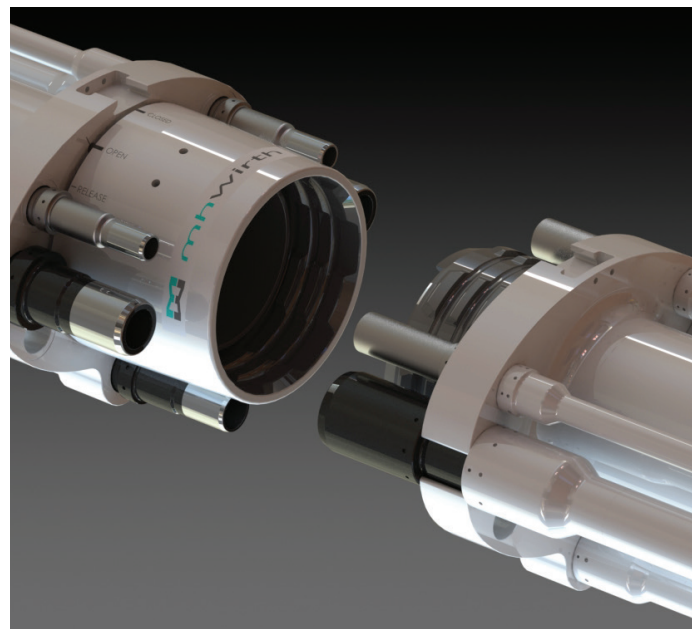
- Manual and hydraulic running tools
- Spider and gimbal
- Pressure test tools
- Combined pressure test and running tool
- Riser bay handling tool
- Riser tension rings for wireline (WLT) or direct acting tensioner (DAT)
- Landing joint
- Soft hang off joint
- BOP Landing Assist Tool (BLAT)

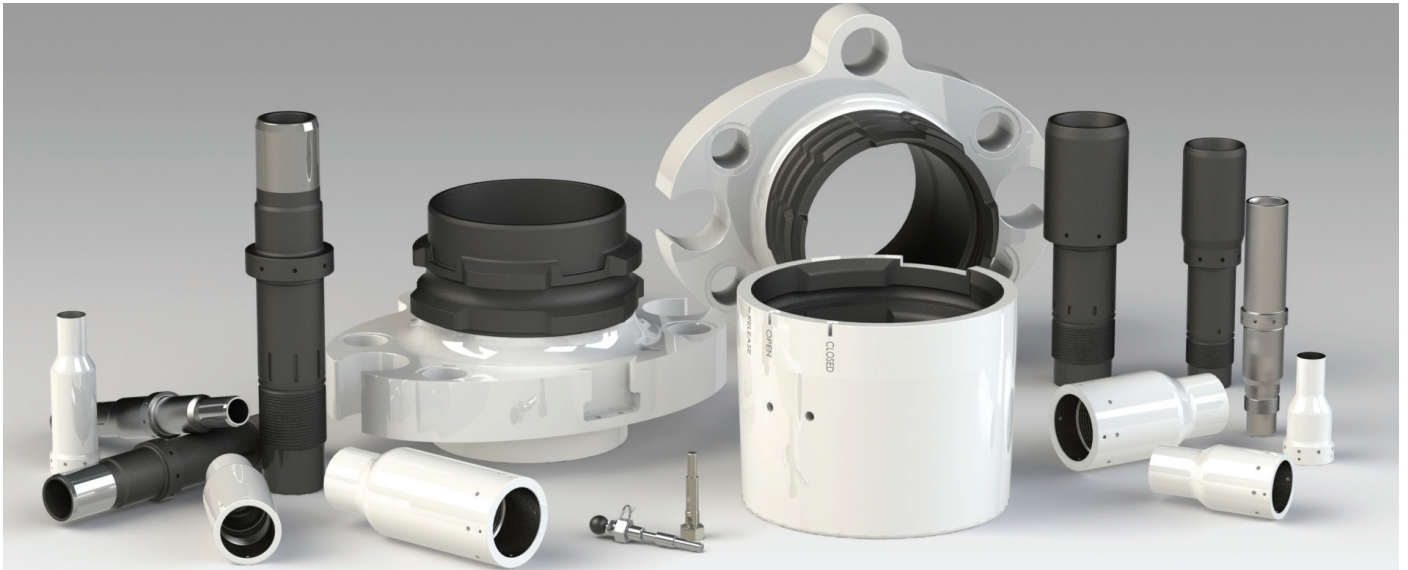
### Special Joints

- Telescopic joint with guided or hands-free gooseneck system
- Fill-up valve
- Termination adapter
- Diverter adapter
- Upper flex joint
- Lower flex joint
- Spacer Joint

## Benefits

- Connector make-up without heavy tools in less than 10 seconds
- Replaceable lock ring and p-line pins and boxes together with integrated and removable lift lugs results in superior inspection and maintenance availability both on- and offshore
- No pretension of the connector is required
- The QTR™ LS riser connector family is prepared for up to 8 p-lines
- High strength steels with reduced risk of HISC





## Technical Specifications

Operating load rating	4 000 kips (1 800 mT)
Drift diameter	Up to 19.25 in (488.95 mm)
Working pressure, standard on C&K lines	15 000 psi (1 035 bar)
Number of p-lines, max.	8
Outer diameter of riser system, min.	48 in (1 219.20 mm)
Riser joint lengths	As per customer request
Outer diameter main pipe	21.0 or 21.5 in (533.40 or 539.75 mm)
Temperature range, standard C&K line	-4°F to +250°F (-20 to +121°C)

Data is subject to confirmation by the manufacturer.