

# Drilling Riser



## QTR™ 3500

The field proven Quick Turn Riser connector QTR™ 3500 is an efficient and safe heavy duty connector. The QTR™ type drilling riser offers the most efficient and HSSE friendly riser system due to the connector's simple locking system.

The QTR™ 3500 riser connector does not require any heavy tools. One person, with a steel bar, can lock or unlock the connector in less than 15 seconds. This, in addition to no pretension requirements and confirmed lock position, ensures superior HSSE performance. Replaceable p-line pins ensure the possibility to replace worn seal area on the rig, and thereby reduce the requirements to send the riser onshore for maintenance.

The track record of the riser shows potential to trip up to 8 - 10 riser joints per hour resulting in reduced time and cost for our clients and the oil companies.

The QTR™ 3500 is made out of carefully selected high strength steels with reduced risk of Hydrogen Induced Stress Cracking (HISC). It is well suited for thermally sprayed aluminium coating and enhanced corrosion protection. The QTR™ 3500 riser connector is certified by DNV and ABS.

### Tool Package

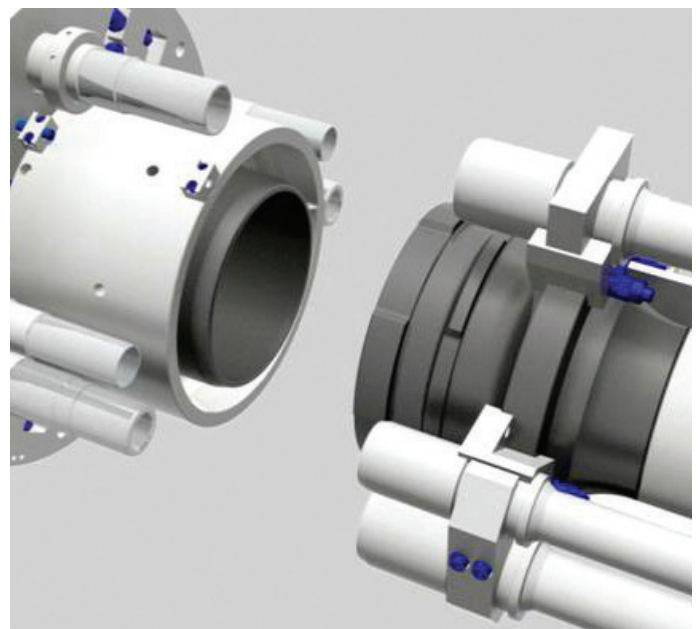
- Manual and hydraulic running tools
- Spider with integrated gimbal
- Pressure test tools
- Combined pressure test and running tool
- Riser bay handling tool
- Riser tension rings for wireline (WLT) or direct acting tensioner (DAT)
- Landing joint
- Soft hang off joint
- BOP Landing Assist Tool (BLAT) tool

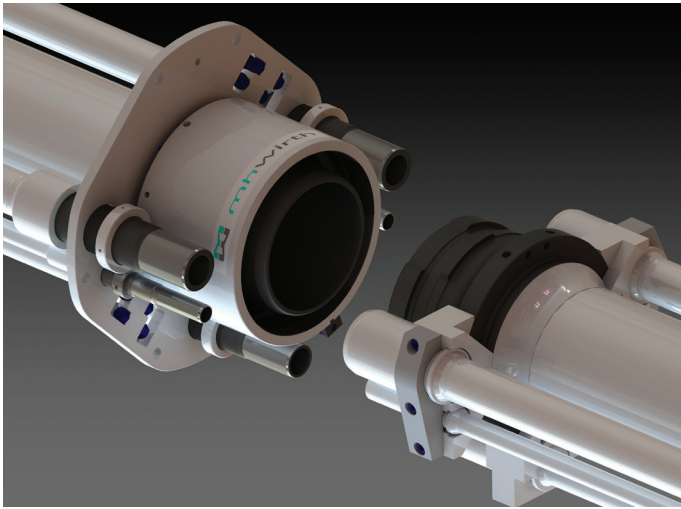
### Special Joints

- Telescopic joint with guided or hands-free gooseneck system
- Fill-up valve
- Termination adapter
- Diverter adapter
- Spacer joint
- Upper flex joint
- Lower flex joint

## Benefits

- Connector make-up without heavy tools in less than 15 seconds
- Replaceable p-line pins
- No pretension of the connector is required
- Eight p-lines may be integrated in the design
- High strength steels with reduced risk of HISC (Hydrogen Induced Stress Cracking)





## Technical Specifications

Operating load rating	3 500 kips (1 590 mT)
Drift diameter	18.76 in (479.05 mm)
Working pressure, standard on C&K lines	15 000 psi (1 035 bar)
Number of p-lines, max.	8
Outer diameter of riser system, min.	54 in (1 371.60 mm)
Riser joint lengths	As per customer request
Outer diameter main pipe	21 in (533.40 mm)
Temperature range, standard C&K line	-4°F to +350°F (-20 to +177°C)

Data is subject to confirmation by the manufacturer.